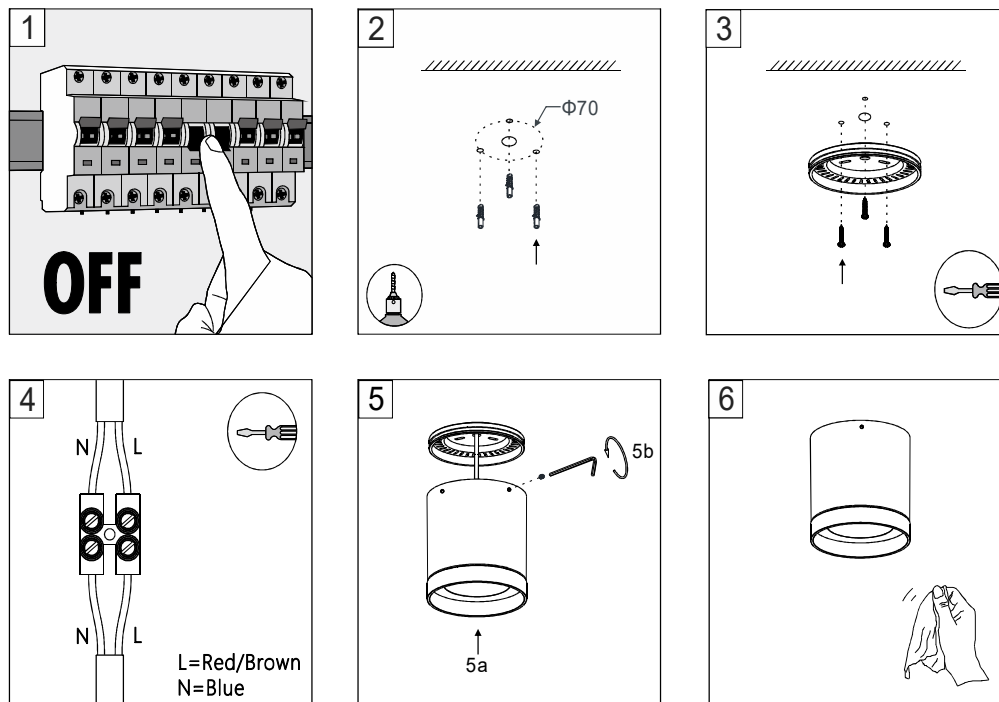


Surface Mounted LED Down Light Instruction

Please read this instruction before the installation and care for reference



Cautions

1. Light fixture connect to the power: 220-240 VAC, 50-60Hz
2. Use only rated power (see power label)
3. For your safety, please disconnect the electricity before installation/maintenance/replacement.
4. Do not operate until the light cool down.
5. Do not connect electricity until the light is installed properly
6. Make sure at least a 75mm ventilation around the frame. The distance between light fixture and object not less than 500mm, Don't use the light fixture against fire regulations.
7. Do not install the light fixture to the ceiling that is easily damaged or deformed.
8. Do not cover the light fixture with any heat proof gasket or similar materials.
9. If any abnormal situation occurs, Please turn off power immediately, and contact our service or consign to the professional engineer.
10. Any question about this instruction, please contact us or consult qualified engineer.