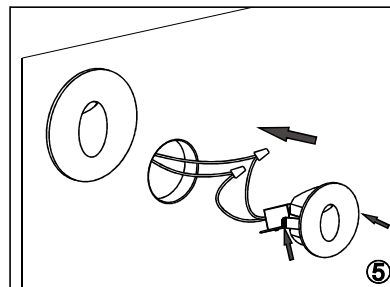
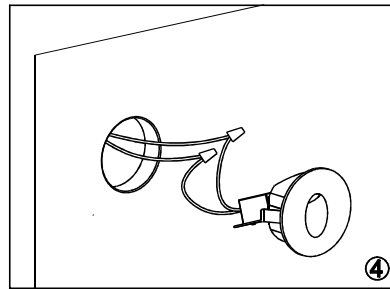
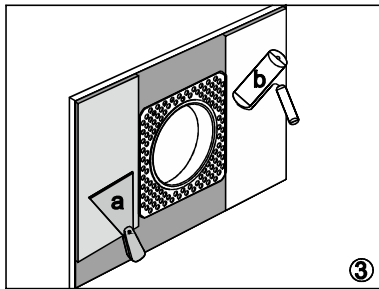
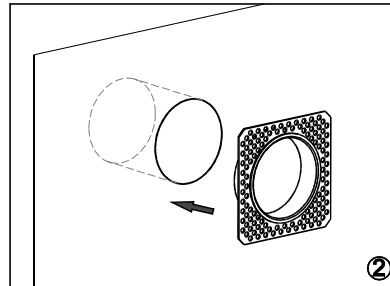
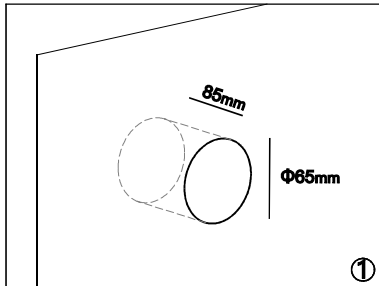


Wall Lamp Instruction

Please read this instruction before the installation and care for reference

To users

- Thanks to purchase our products!
- Please read this instruction carefully before using it and properly care for reference!



Caution

- Input voltage: 220-240V 50-60Hz;
- To ensure safety, please cut off the electricity before installation, maintenance and replacement of light source, and to operate after the lamp is cooled. In sure the correct method of installation and other then to connect the power supply;
- There must be the intake of 75mm around the lighting fixture. Keep a space of at least 500 mm between light source and any combustible object. The light fixture can not be used for any breach of fire safety regulations;
- Do not install the light fixture to the ceiling that is easy damaged or deformed;
- Anytime, the lighting fixture can not be covered by heatproof gasket or similar material;
- If there is abnormal situation occurred, please turn off power immediately and contact with our service agent or consign the professional engineer to take charge of checking;
- Of the brochure have any concern about, please consult to certificate holders of Engineers.