

Please read below instruction manual carefully before installation and keep it for reference.

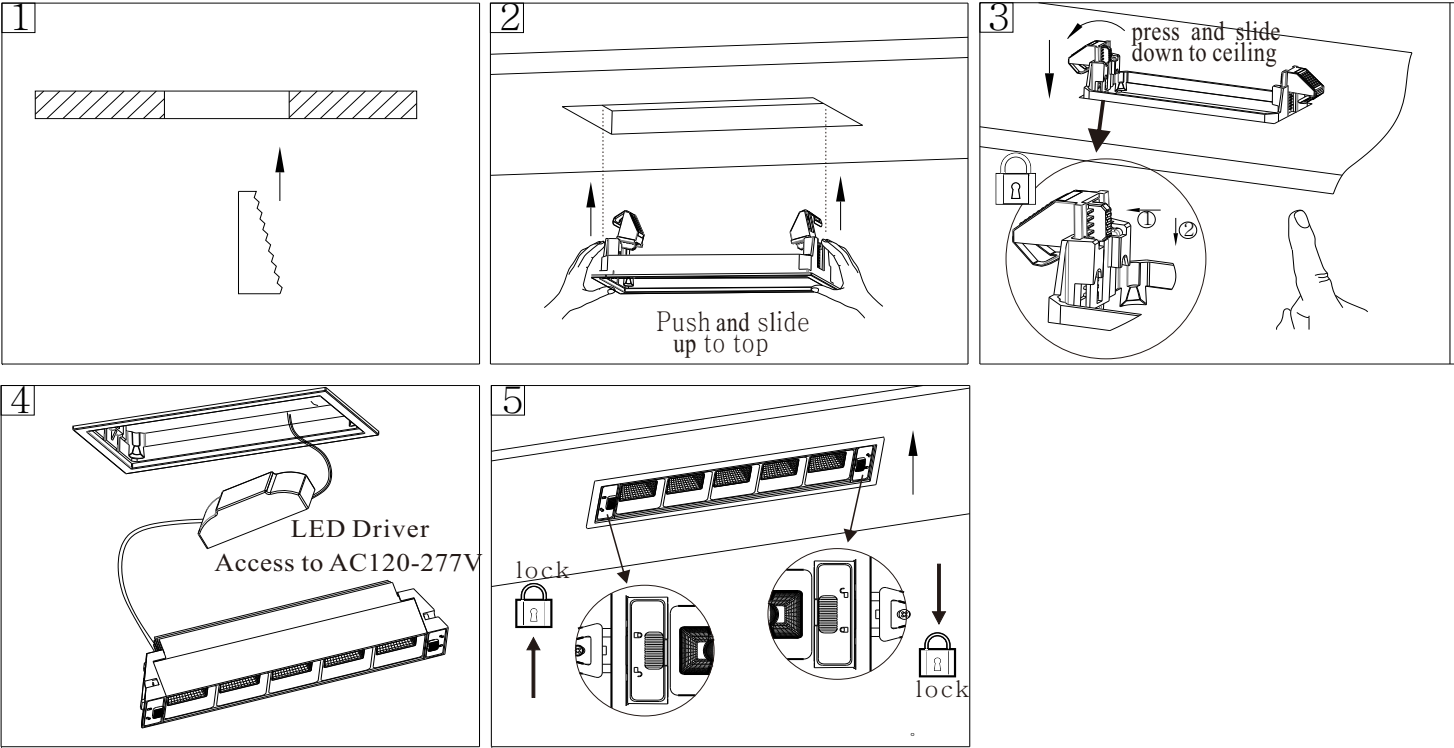
Linear Light Instruction Manual

Attention

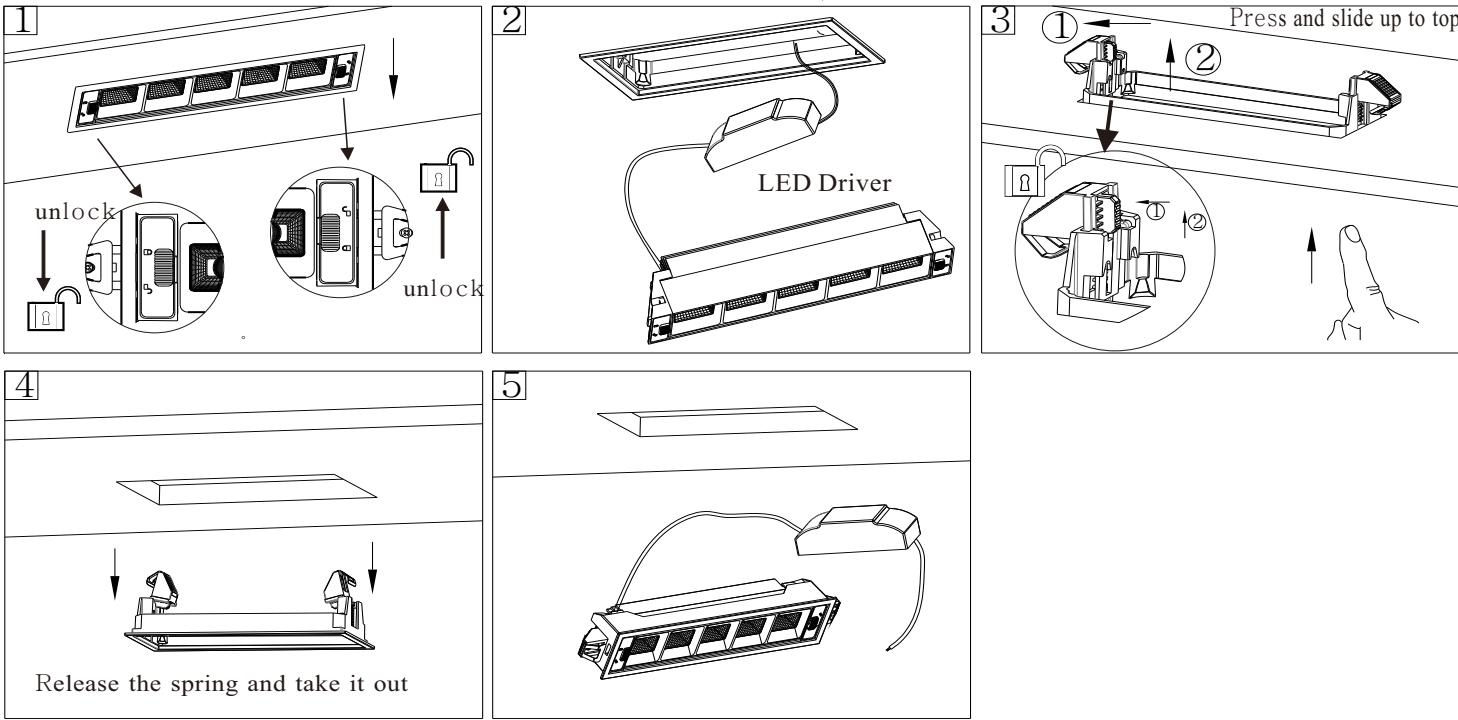
1. Notice: Be sure to cut off the power before installation, and assign a professional operator. It is dangerous to operate by non-professional person.
2. In order to keep installation safe, the total current should be over twice of the rated current of all fixtures.
3. Input voltage: 120-277V/50–60Hz.
4. Make sure this item is installed nearby a vent with dimension not less than 75mm.
5. In any case, the fixture can' t be covered by heat–insulated pad or similar materials.
6. Do not install the fixture neither on top of the stove, gas and vent such kinds of high temperature objects nor the heavy moist location. Do not install on unstable, precarious ceiling to avoid unnecessary losses.
7. Make sure the power supply has been cut off before installation, maintenance and replacement.
8. Do not try to repair fixture by yourself, please cut off the power supply when detecting any unnormal situation and contact proffesional person or local distributor.
9. To prolong the lifetime of fixture and maintain lighting effect, clean and maintain the fixture regularly.
10. Cut off the power before cleaning the fixture, using a soft wet cloth to clean the light(industrial alcohol is applicable), then use a dry cloth to wipe dry the liquid to prevent electricity leakage or short-circuit.

Installation instructions

1. Open hole according to the specified dimension. (As pic 1)
2. Release the spring and put into the hole. (As pic 2)
3. Lock the embedded box on the ceiling. (As pic 3)
4. Cut off the power and connect wires. (As pic 4)
5. Insert the lampbody in the embedded box and lock it. (As pic 5)



Uninstallation diagram



Specification

S/N.	Model	Voltage	Beam Angle	CRI	Output	CCT	Cut-out
1	One head	AC120V-277V	15° /24° /36°	≥90	5W	2700K-4000K	74X50mm
2	Two heads	AC120V-277V	15° /24° /36°	≥90	10W	2700K-4000K	112X50mm
3	Three heads	AC120V-277V	15° /24° /36°	≥90	15W	2700K-4000K	150X50mm
4	Five heads	AC120V-277V	15° /24° /36°	≥90	25W	2700K-4000K	225X50mm
5	Nine heads	AC120V-277V	15° /24° /36°	≥90	45W	2700K-4000K	378X50mm