

Recessed Downlight Instruction Manual

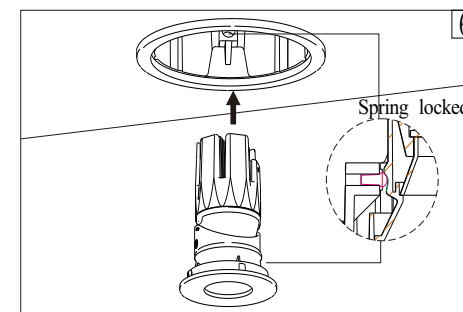
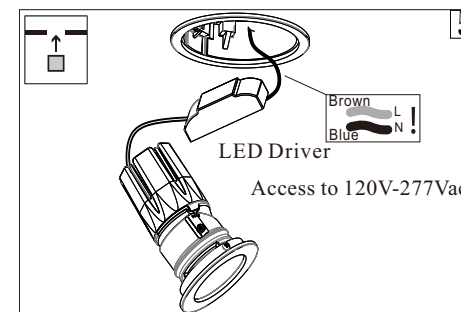
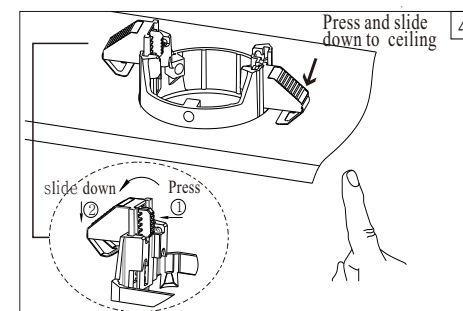
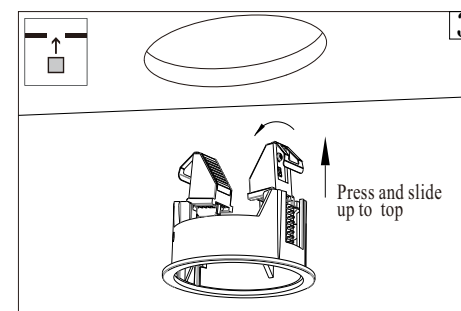
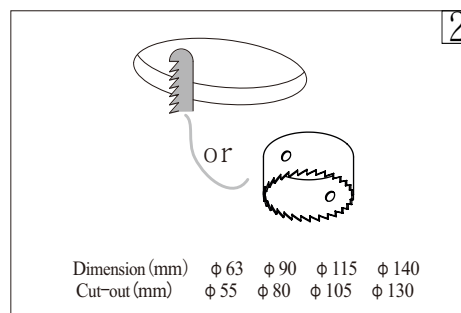
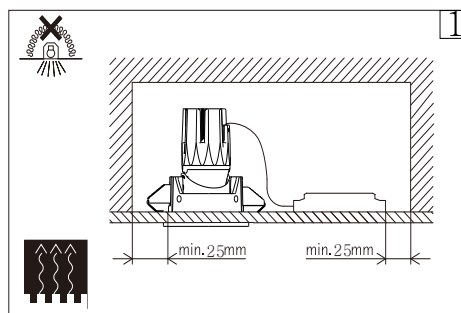
(Round)

Attention

1. Notice: Be sure to cut off the power before installation, and assign a professional operator. It is dangerous to operate by non-professional person;
2. In order to keep installation safe, the total current should be over 2 times of the rated current of all fixtures;
3. Input voltage: 120-277V/50-60Hz ;
4. Be sure this item is installed nearby a vent with dimension not less than 75mm;
5. In any case, the fixture can't be covered by heat-insulated pad or similar materials;
6. Do not install the fixture over the stove, gas and vent above such as high temperature object also the heavy moist location. Do not install in unstable, precarious ceiling to avoid unnecessary losses;
7. Please make sure the power supply has been cut off before maintenance, installation and replacement;
8. Do not try to repair fixture by yourself, please cut off the power supply when detecting any unnormal situation and contact professional person or local distributor;
9. To prolong the lifetime of fixture and maintain lighting effect, clean and maintain the fixture regularly;
10. Cut off the power before cleaning the fixture, using a soft wet cloth to clean the light (industrial alcohol is applicable), then use a dry cloth to wipe dry the liquid to prevent electricity leakage or short-circuit.

Installation instructions

1. Installation position should be good heat-dissipation. (As pic 1)
2. Cut the hole as per specified dimension. (As pic 2)
3. Press and slide the spring up to top and put into the hole. (As pic 3)
4. Press and slide down the spring. (As pic 4)
5. Cut off the power and connect the wires. (As pic 5)
6. Put the lampbody into embedded box. (As pic 6)



Uninstallation diagram

